



**NEW**

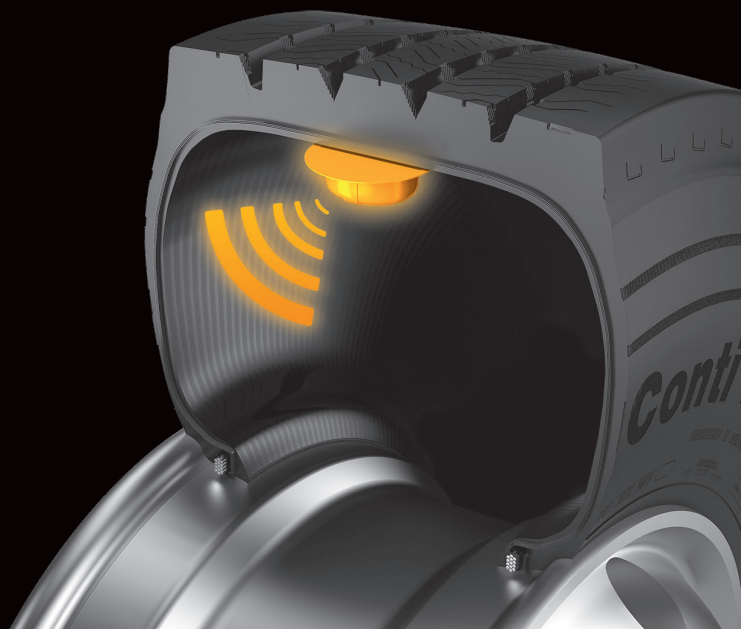
Automatic trailer learning  
Telematics integration

## **ContiPressureCheck™**

The tyre pressure monitoring system

Continuous tyre pressure monitoring drives  
down overall operating costs:

- › Lower fuel consumption
- › Reduced risk of tyre-related breakdowns
- › Extended tyre life



# Maintaining correct tyre pressure: a simple solution

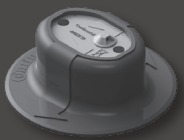
Underinflated tyres can often be attributed to high operating costs. Due to the demands placed on drivers today, monitoring tyre pressures does not always happen as frequently as it should. The new ContiPressureCheck system continuously measures the pressure and temperature of all tyres on your vehicle – even when you are driving. This helps to save fuel and increase mileage. It also significantly reduces the risk of tyre failure, whilst maintaining the value of the casing, and thus the retreadability.

ContiPressureCheck uses sensors fitted inside each tyre to provide drivers with real-time information on tyre status. Any irregularity noticed by the driver or fleet manager can be checked and corrected immediately.

Thanks to the new ContiPressureCheck system, you can now actively reduce operating costs by up to EUR 1,500 per vehicle a year\* while improving driver and vehicle safety.

The system covers almost all combinations of fitment, from single axle trailer to six axle vehicle configurations with a maximum of 24 tyres. It is suitable for tractors, trailers, tractor/trailer combinations, as well as buses and coaches.

\* savings based on 4 x 2 tractor with three-axle semi-trailer driving 140,000 km per year (assumed price of diesel: 1 €/l), including estimated costs (approx. EUR 700) for one tyre-related breakdown.



## 1 Tyre sensor:

All tyre sensors are mounted on the tyre inner liner inside a rubber housing (tyre sensor container) and continuously measure the tyre pressure and temperature.



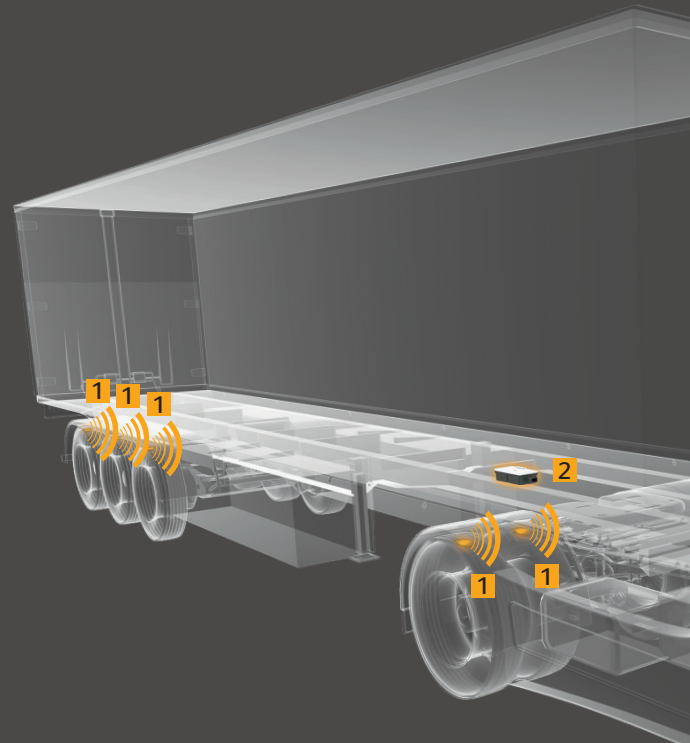
## 2 Additional receiver:

The additional receiver can be used to receive sensor signals in challenging radio frequency conditions.



## 3 Central Control Unit (CCU):

The CCU receives tyre sensor signals directly or via the additional receiver, evaluates the data and provides the status of all tyres to the display or the telematic systems.



## Your benefits

### Easy

ContiPressureCheck is quick and easy to install. Mounting inside the tyre guarantees high data accuracy. ContiPressureCheck is compatible with all tyre brands.

### Economical

Driving with the correct air pressure can lead to significant fuel savings, increased mileage and maintain the value of the tyre casing, thus making your fleet more economical.

### Reliable and safe

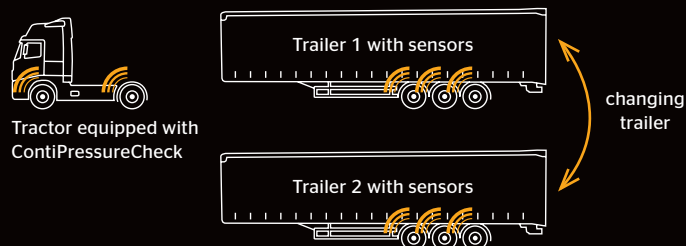
The ContiPressureCheck system helps prevent tyre-related breakdowns that can lead to costly downtime, late fines, negative publicity, danger to other road users and loss of sales or profits.

### Eco-friendly

Running the correct inflation pressure lowers fuel consumption, reduces tyre wear, decreases CO<sub>2</sub> emissions and consequently protects the environment.

## Automatic Trailer Learning (ATL)

Automatic Trailer Learning makes it simple to exchange trailers without the need for additional system configuration.

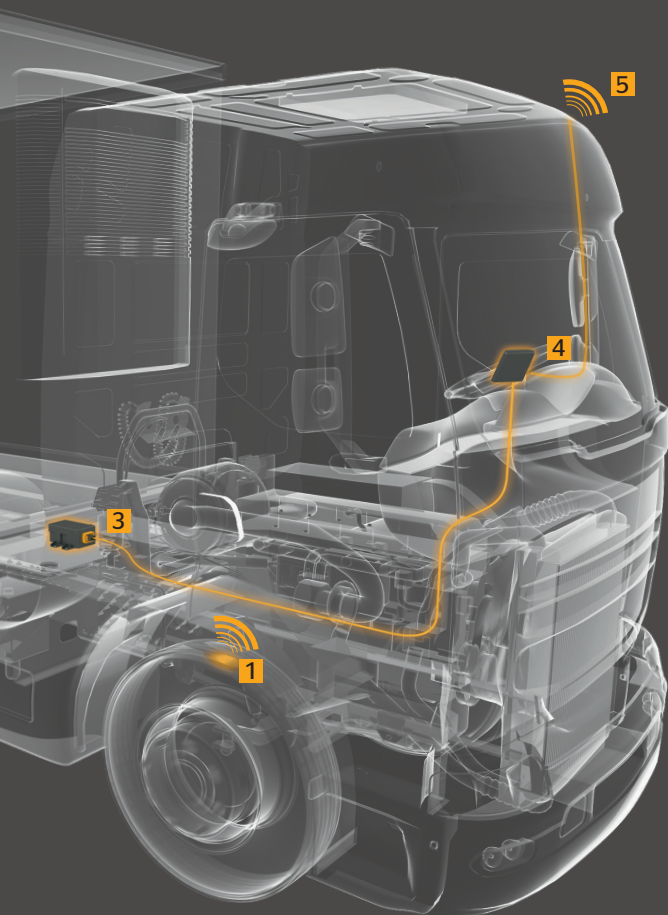


### Surrounding Observer

Until recognised by ATL, all unknown sensors with very low pressure in the vicinity of the CCU will be reported to the driver.

## Telematics integration

The ContiPressureCheck system can be easily integrated into your telematic systems. This gives you the ability to view live inflation pressure and temperature data, as well as to receive real-time alerts.



### 4 Display:

Fixed inside the cab, the display shows the tyre pressures and temperatures and warns the driver in the event of pressure loss.

### 5 Telematics integration (optional):

Easy integration into your telematic systems for live monitoring.



“Since we fitted our vehicles with ContiPressureCheck, we haven't seen any downtime at all as a result of tyre problems. We are all completely impressed by this system, and can only recommend it. It does the job perfectly.”

#### Stefan Rinker

Repair shop manager for Sieckendiek, a truck and bus company and authorised MAN repair shop, based in Versmold-Peckeloh, Germany

